

12

13

14

15

16

17

18

19

20

21

22

23

24

25

26

27

28

29

30

PASSO
LIMITAMENTE A/S
A FAVORE

31° MAPPALE
1183 - 4000mq

MAPPALE
1180 - 15200mq

LINEA D'ADATTAMENTO

32

33

34

35

36

37

38

39

40

41

42

43

44

45

46

47

48

49

50

51

52

53

54

55

56

57

58

59

60

61

62

63

64

65

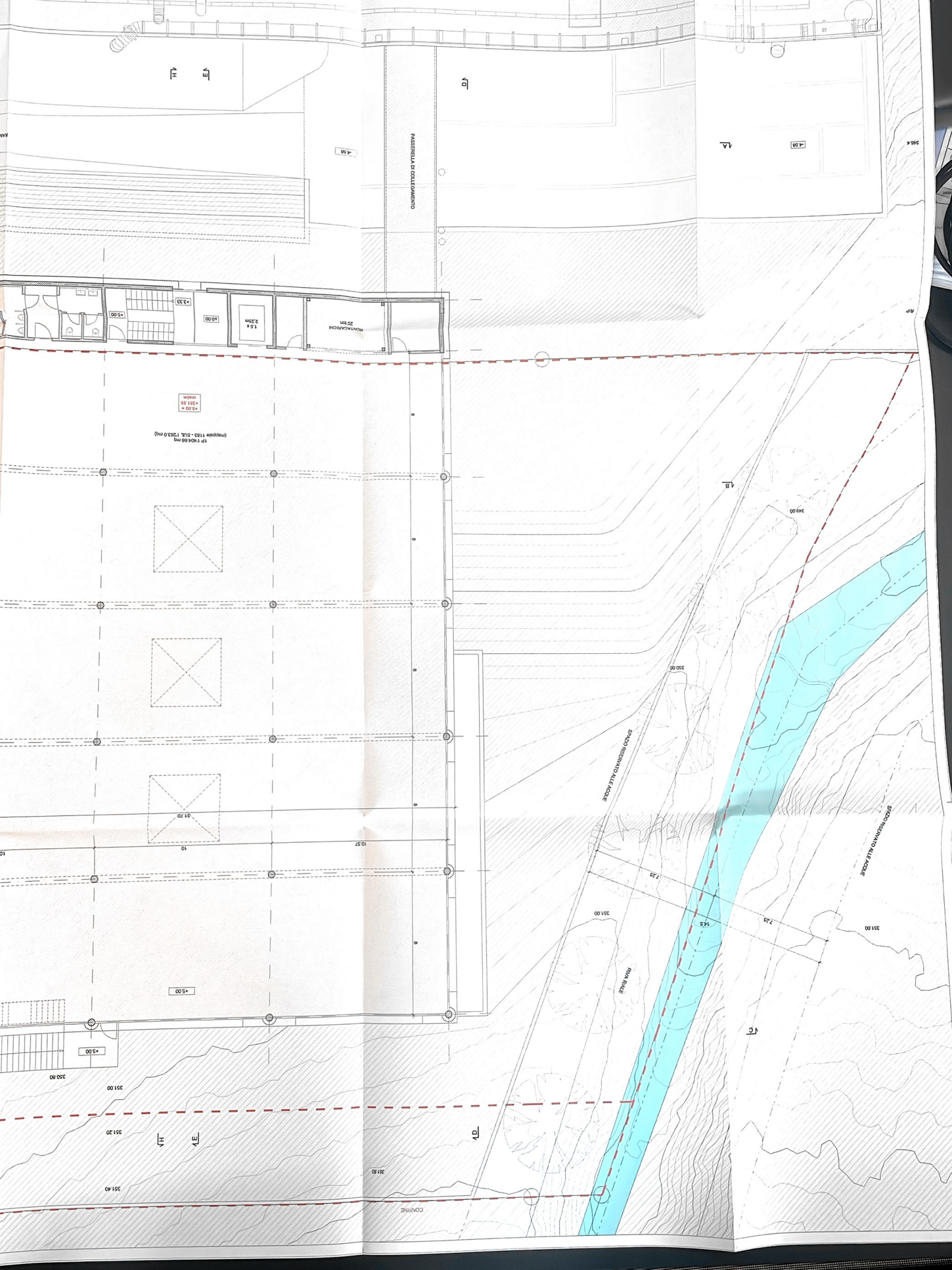
66

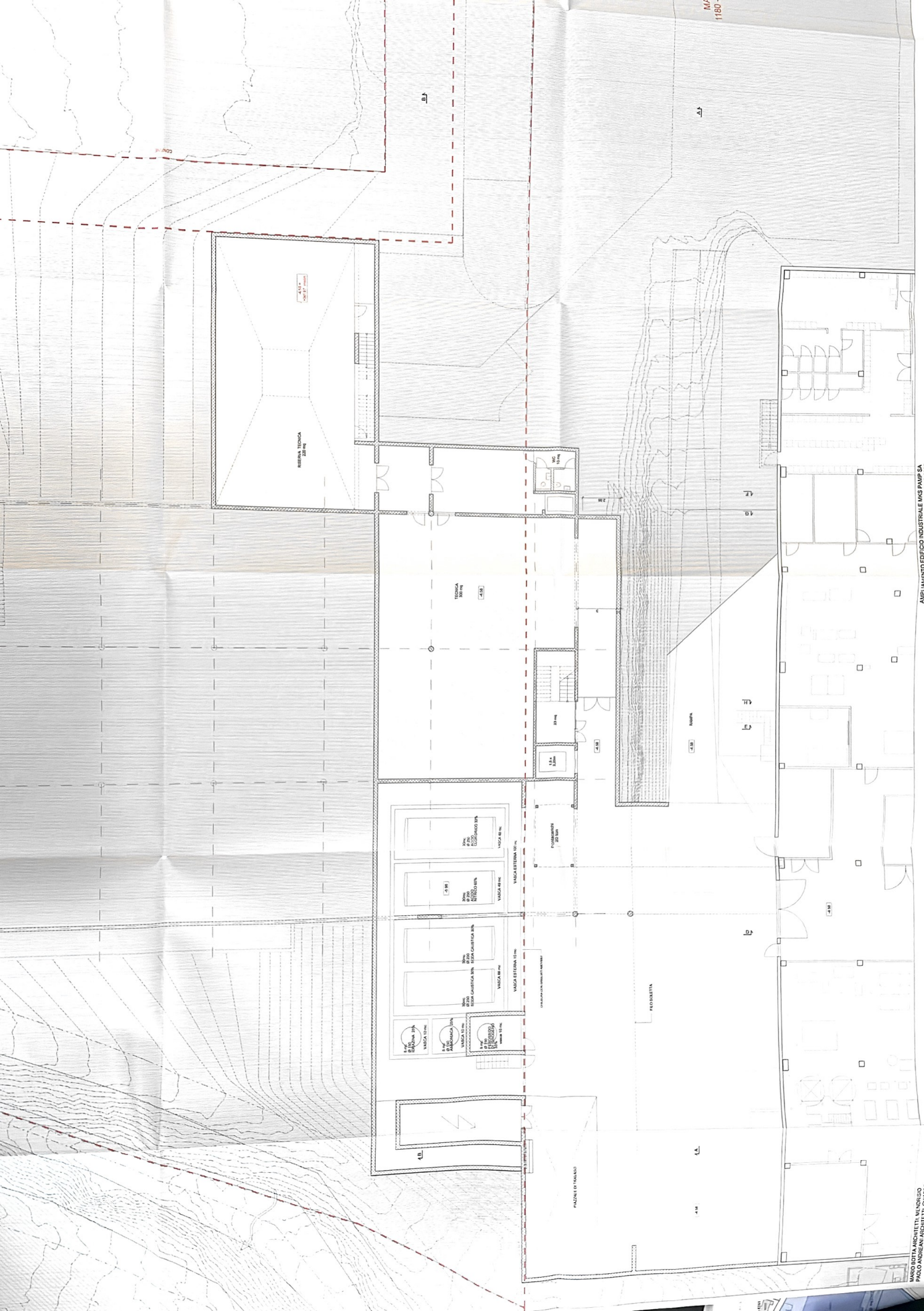
67

68

AMPLIAMENTO EDIFICIO INDUSTRIALE MAS PAPP 04
CANTIERE

TTT. MONDISIO
MOTTI, CHIASSO



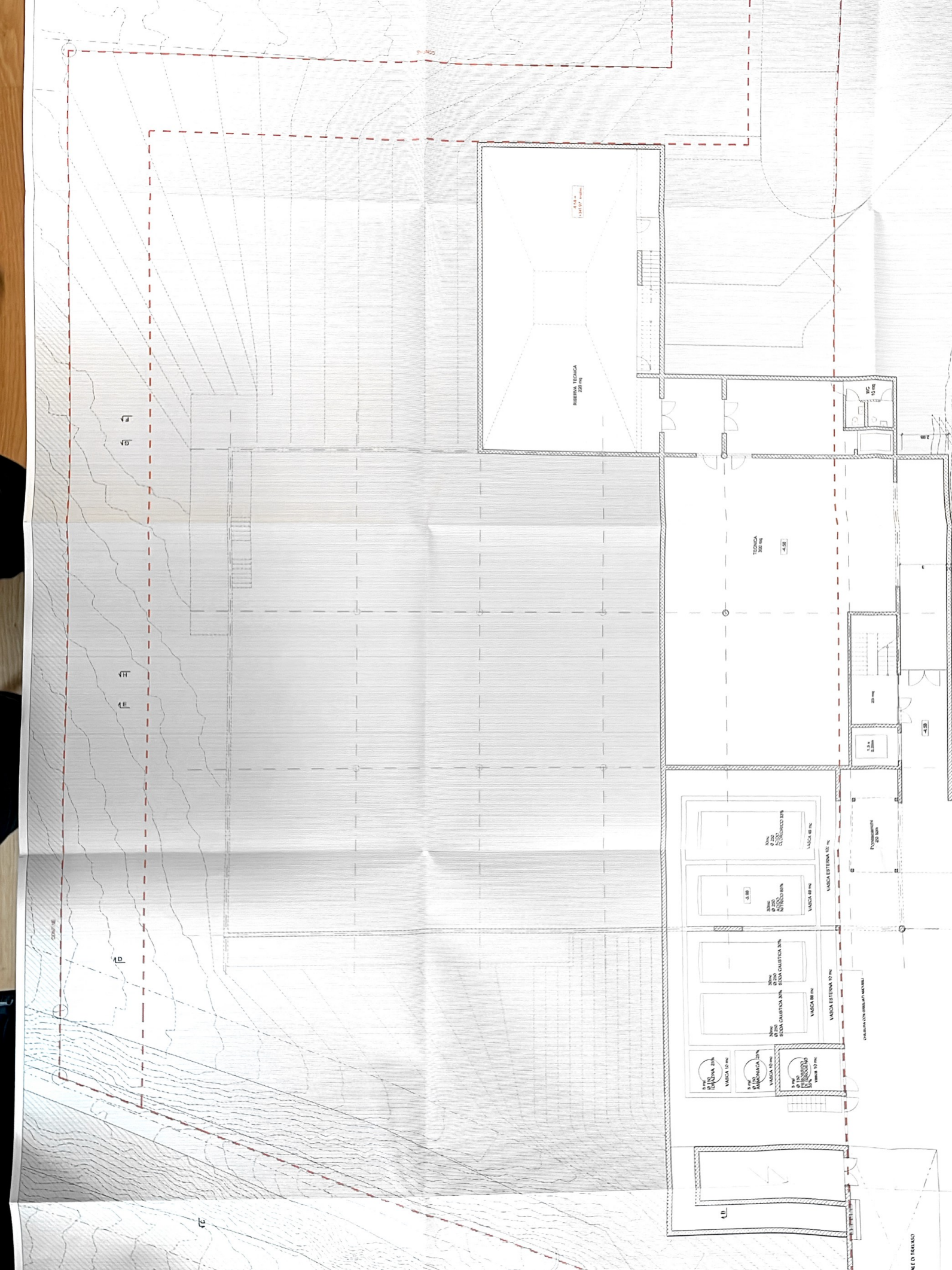


AMPLIAMENTO EDIFICIO INDUSTRIALE WMS PAMP SA
 CASTEL SAN PIETRO MAPP.1183 E 1180 - LUGLIO 2025

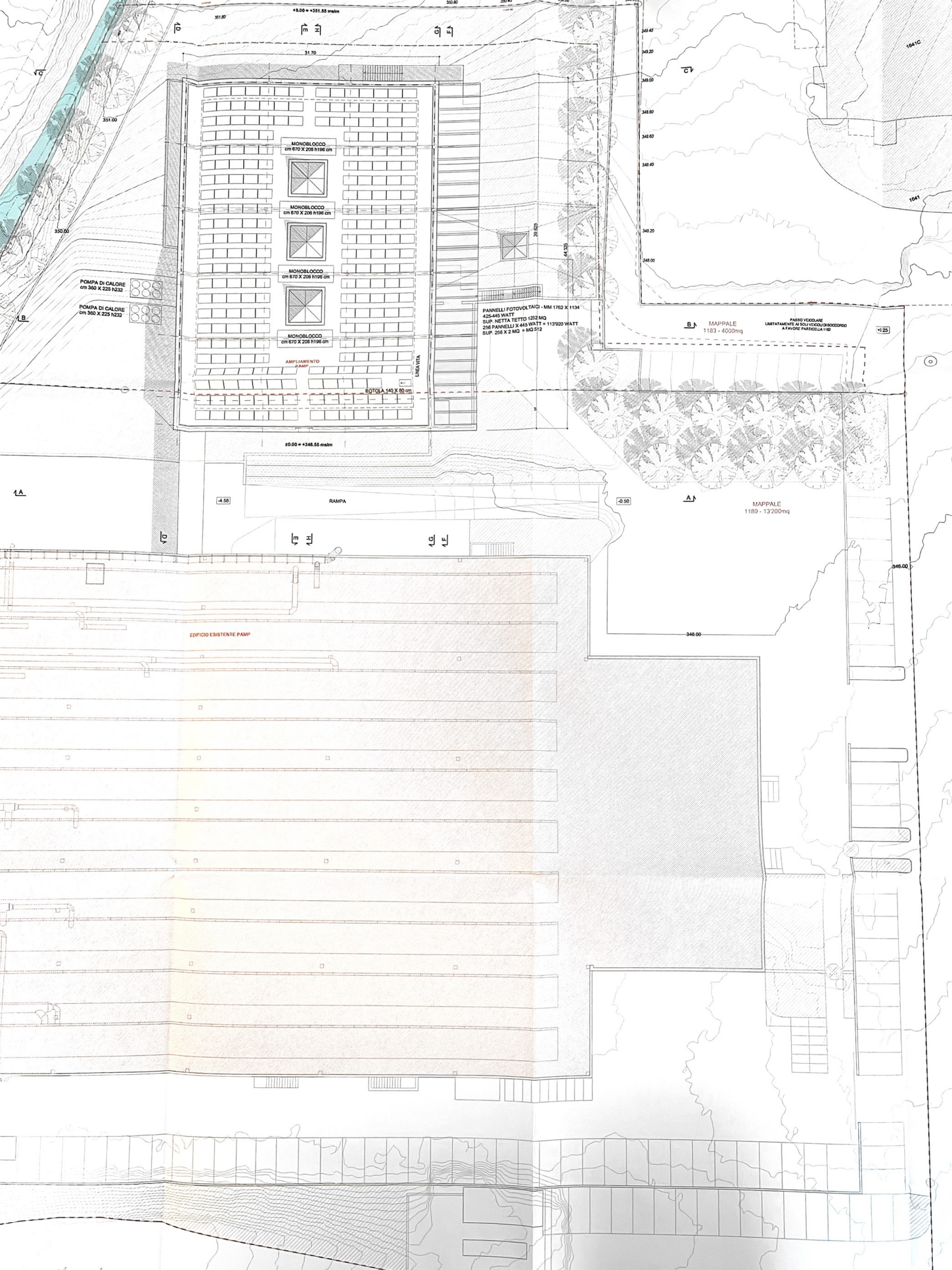
PAZIENZA PIANO TERZA
 48.00 x 4342.54 metri

OSCARO ULLIUSCA ANTONIO ANTONI
 MAPP. 1180 1183, 6374
 INCARICO ENERGIA

AMPLIAMENTO EDIFICIO
 MAPP. 1180 1183, 6374
 INCARICO ENERGIA







INTERVENTO CON FABBRICA ESISTENTE
IN PIANO



00 00000000

00 00000000

00 00000000

00 00000000





b

11
12

13
14
15

COLLEGAMENTO CON FABBRICA ESISTENTE
IN PIANO

PT. 1444 (da 1000 a 1100)

M. NAPPALE
1183 - 4000mq

PARSON
LIMITAMENTE A SO
A FAVORE P.

NAPPALE
1180 - 13200

SEZIONE B-B
SCALA 1:200

PT - 1404,68 mq
(mappa 1183 - SUL 17263,0 mq)

±0,00 =
+346,55
m.s.l.m.

COLLEGAMENTO CON FABBRICA ESISTENTE
IN PIANO

EDIFICIO ESISTENTE

±0,00 =
m.s.l.m.

±1,58+341,97

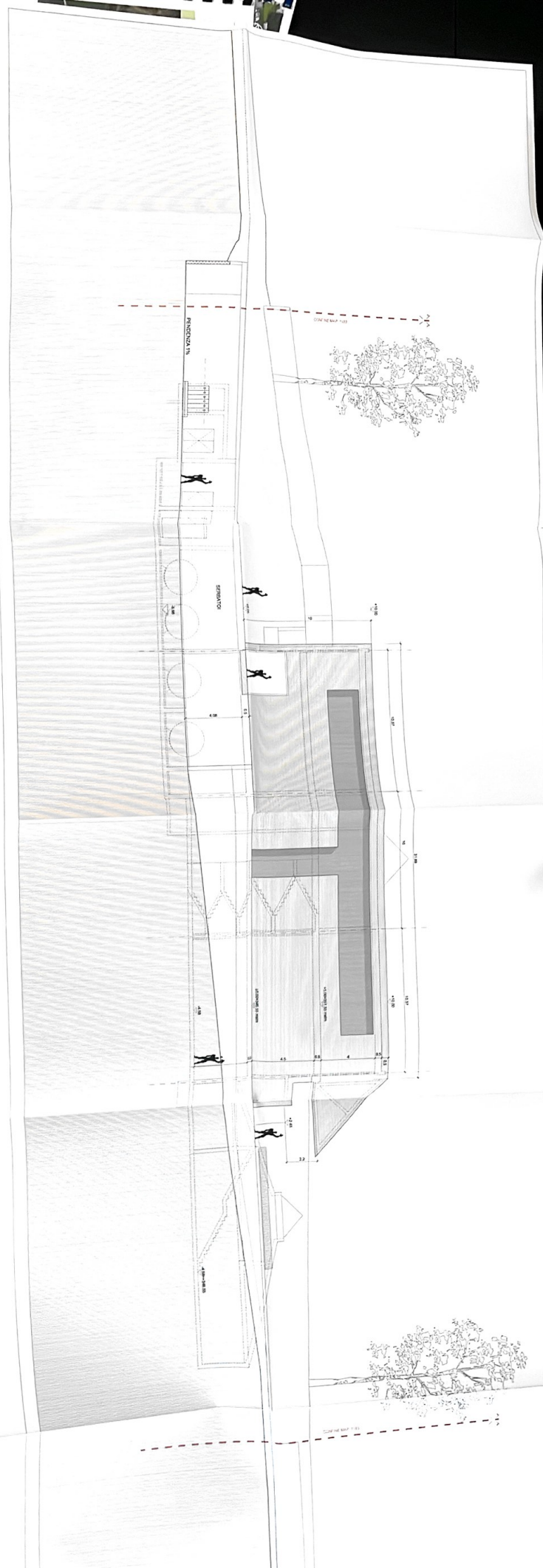
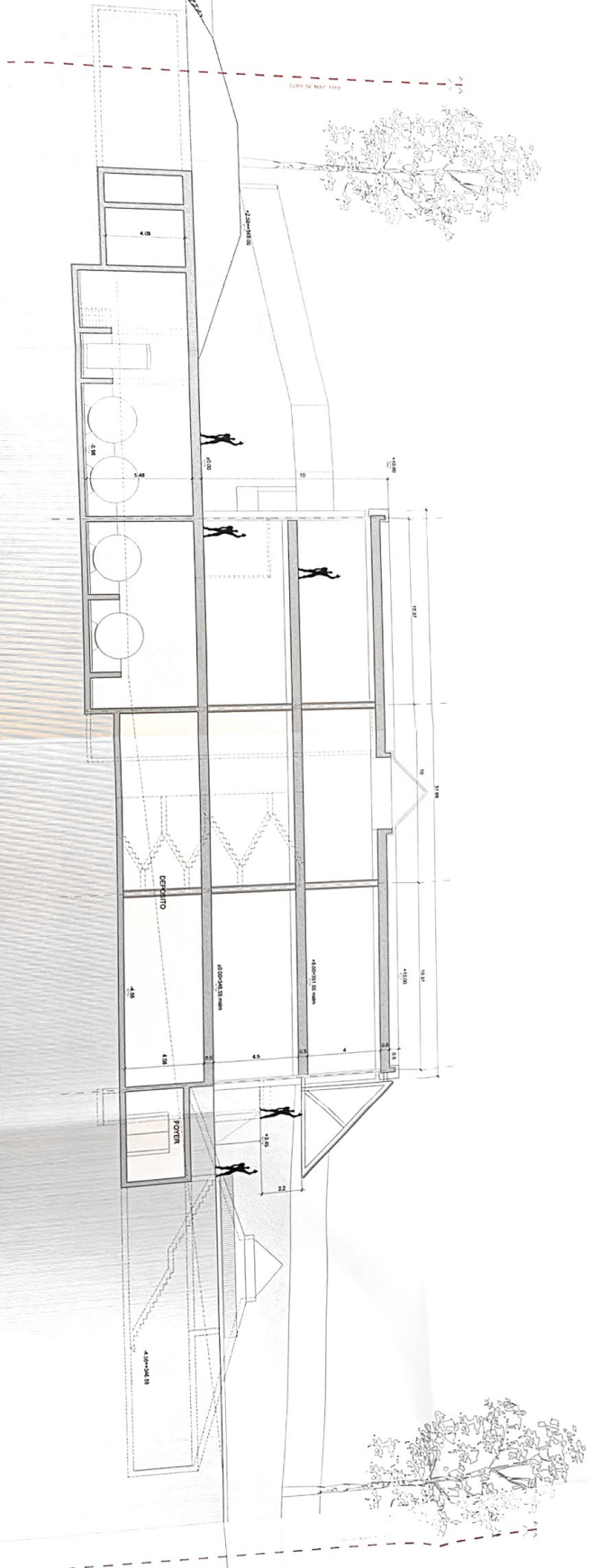
RAMPA

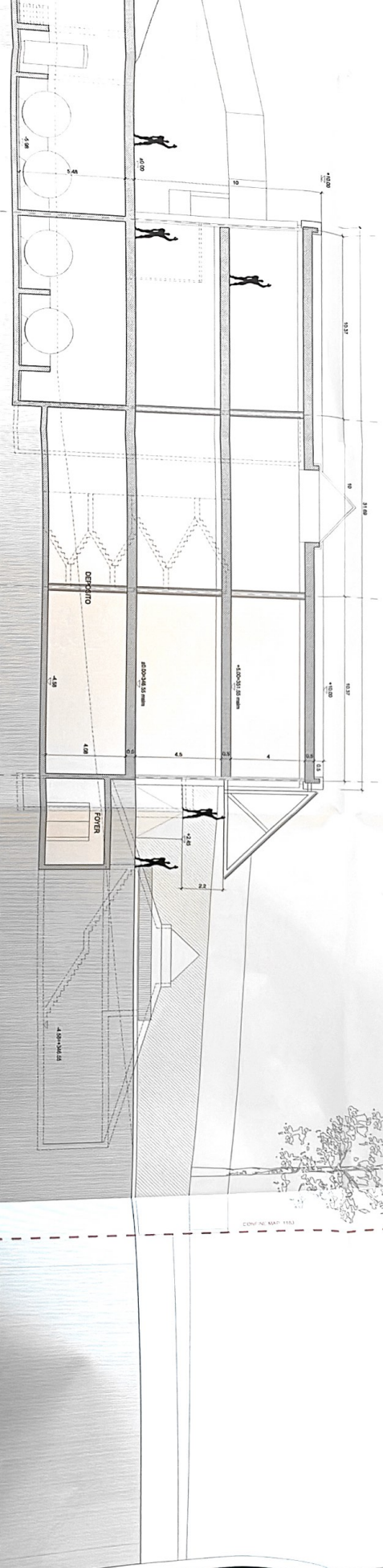
1E
1H

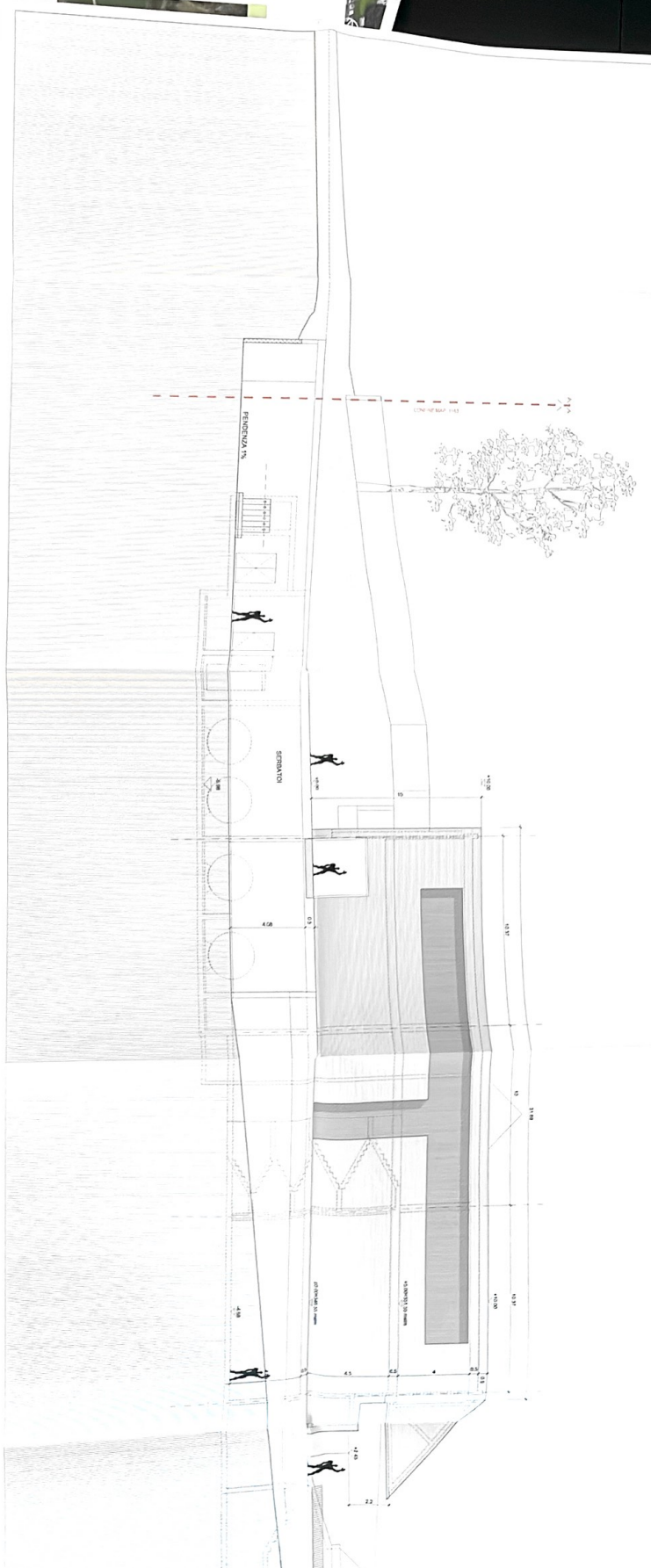
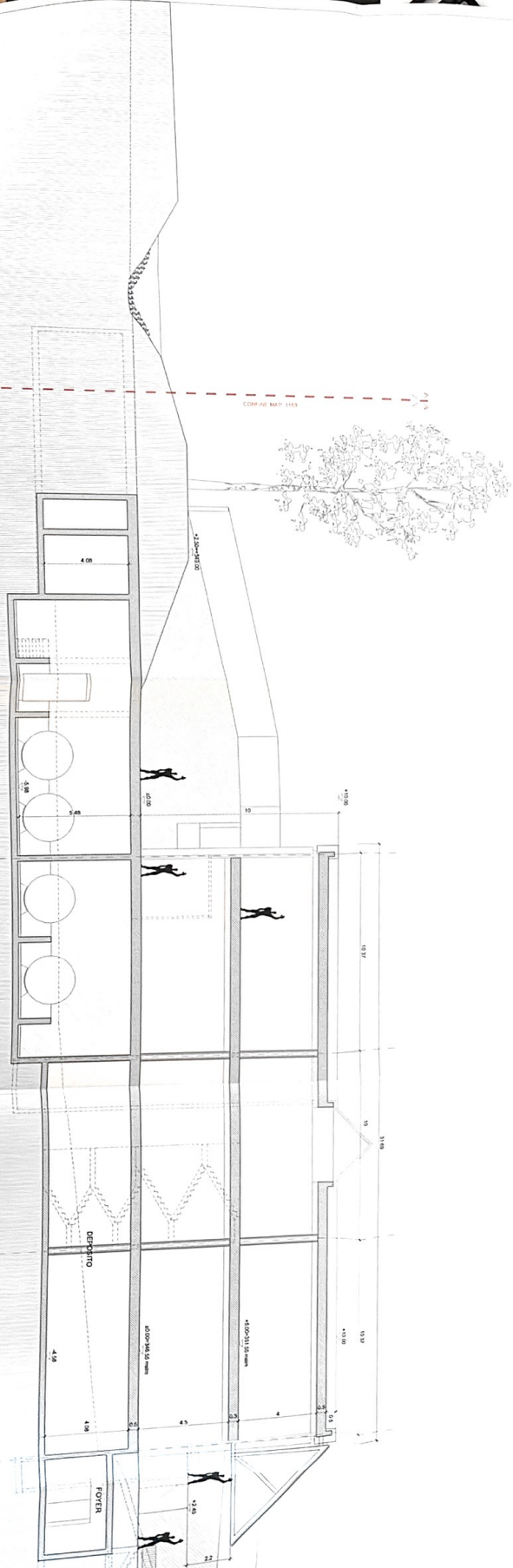
1G
1F

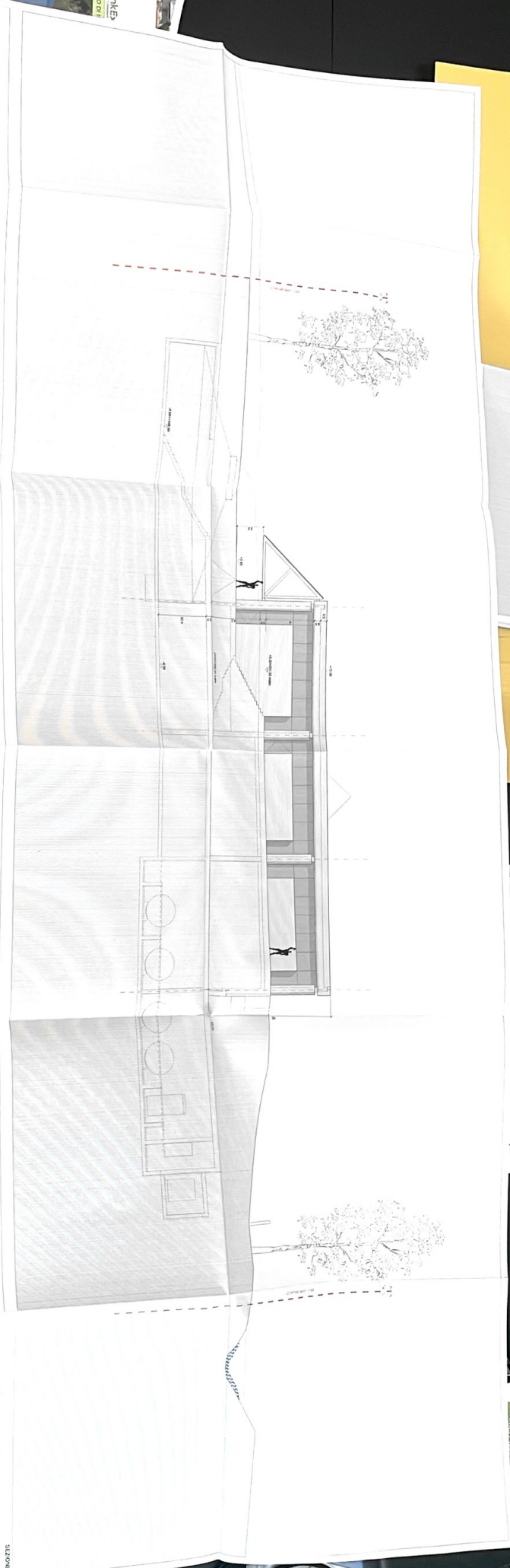
AMPLIAMENTO EDIFICIO INDUSTRIALE MKS PAMP SA
CASTEL SAN PIETRO MAP.1183 E 1180 - LUGLIO 2025



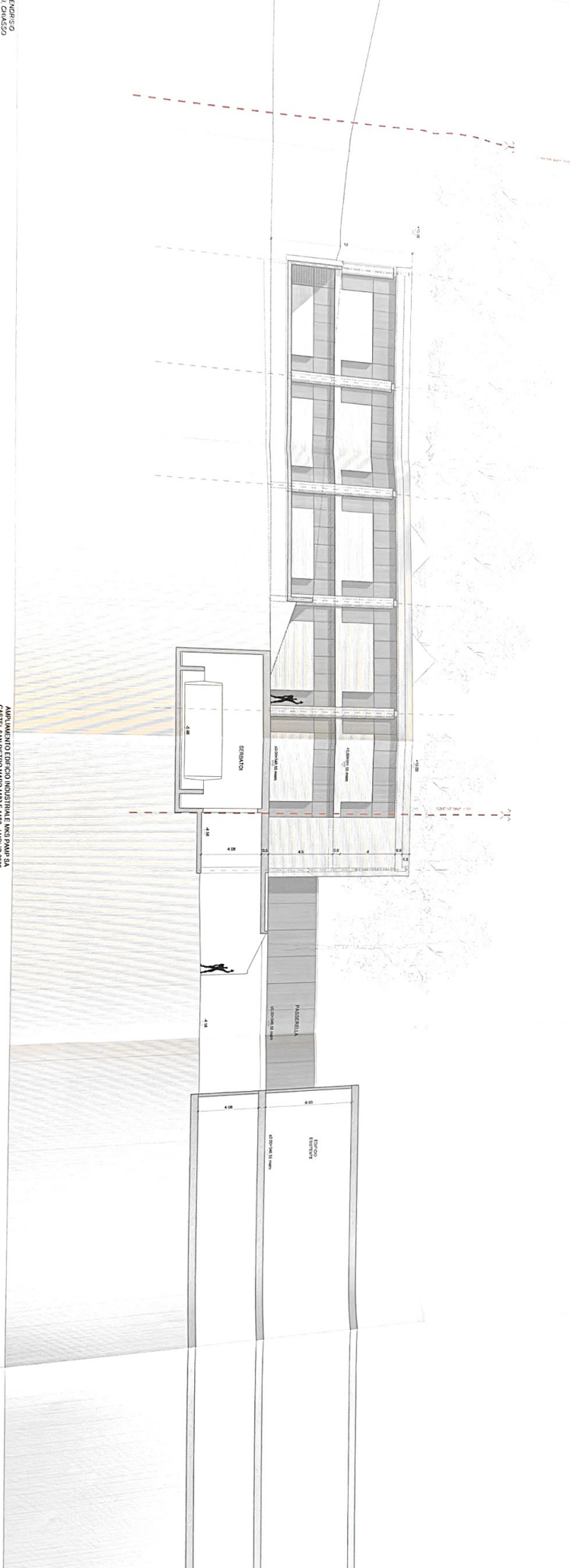






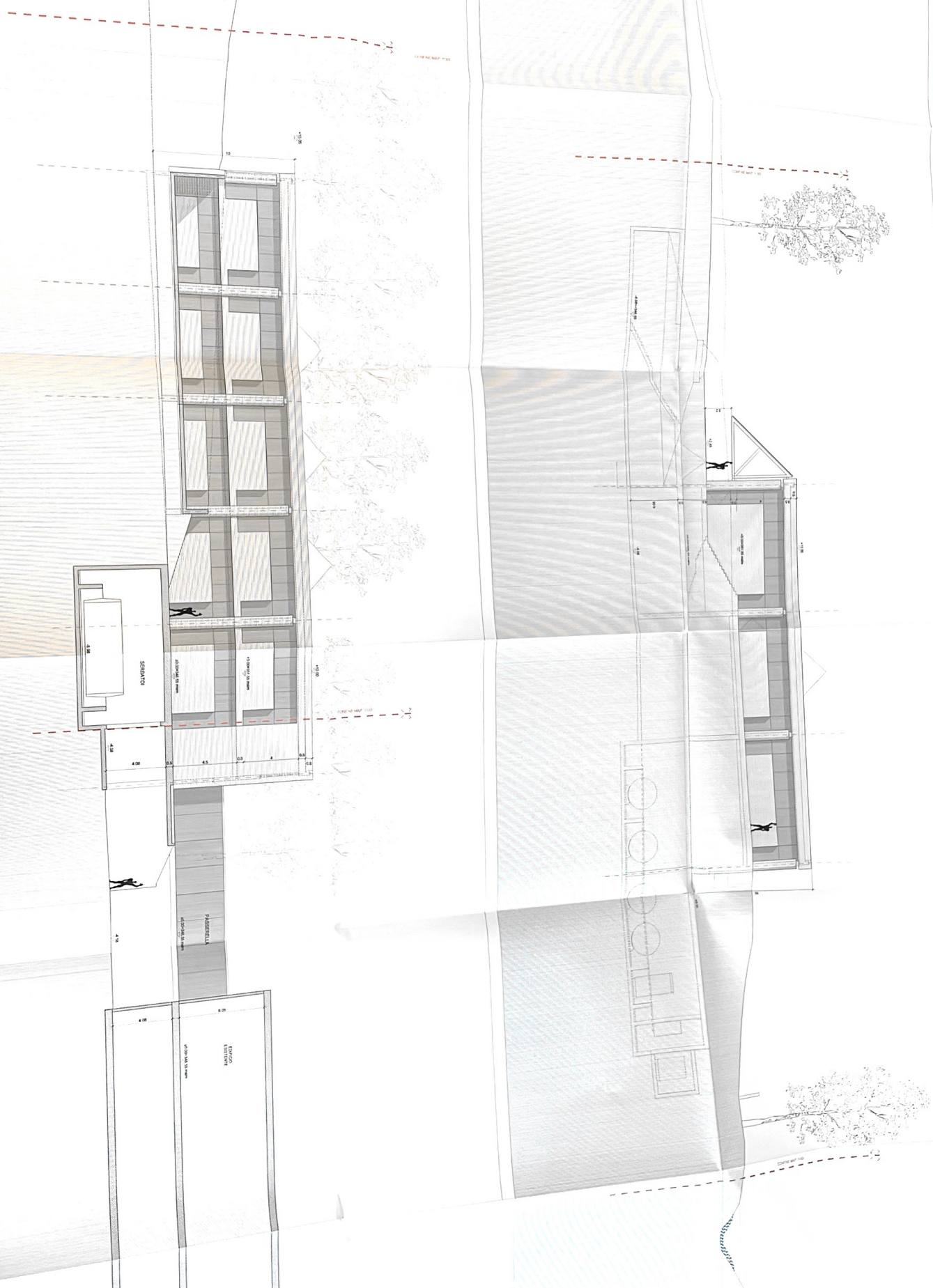


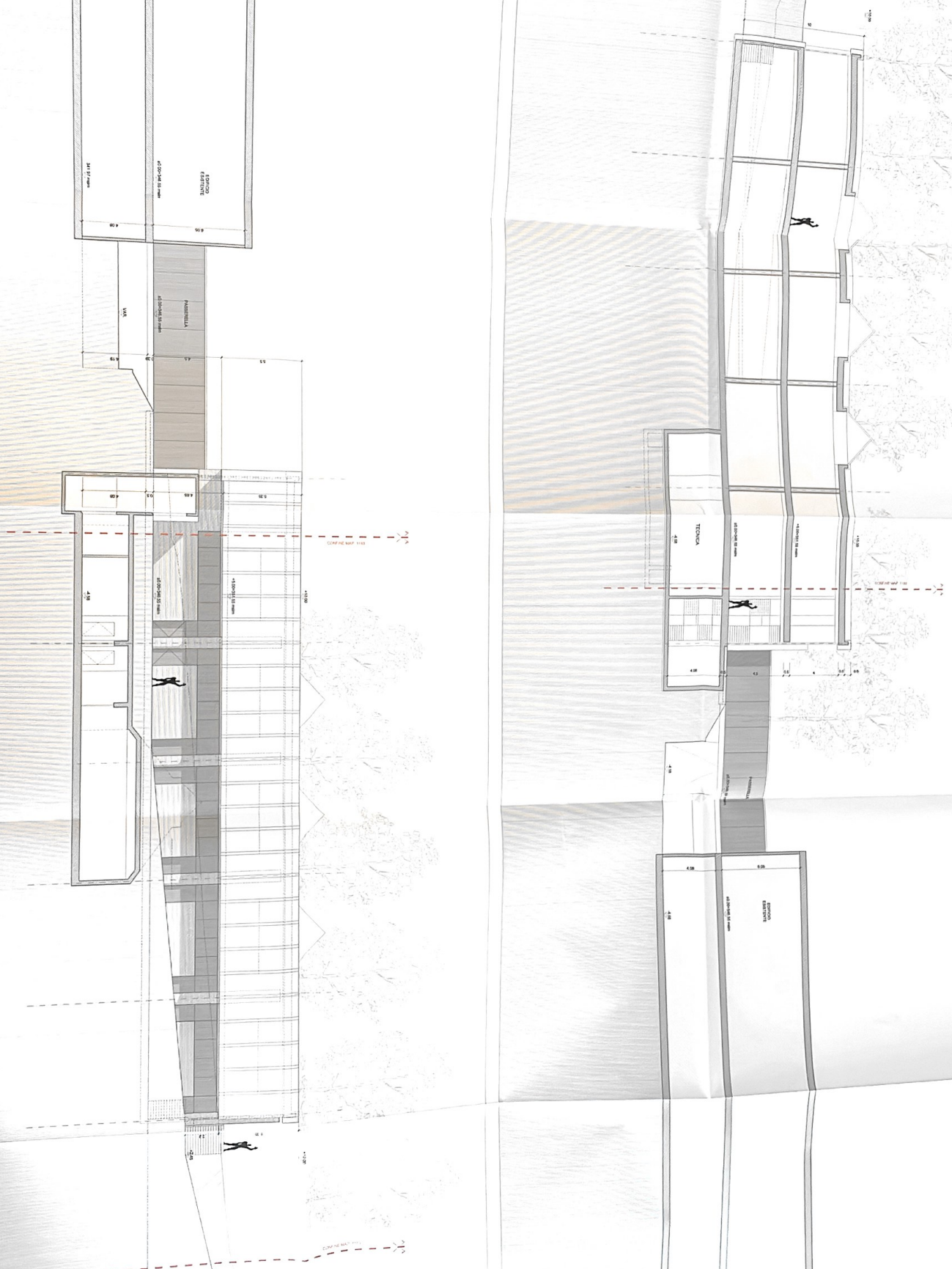
SEZIONE C-C



ARMANDO TESTA ARCHITETTI
COSTE: 2.000.000,00 IVA 10% - LUGLIO 2023

ARMANDO TESTA ARCHITETTI
COSTE: 2.000.000,00 IVA 10% - LUGLIO 2023

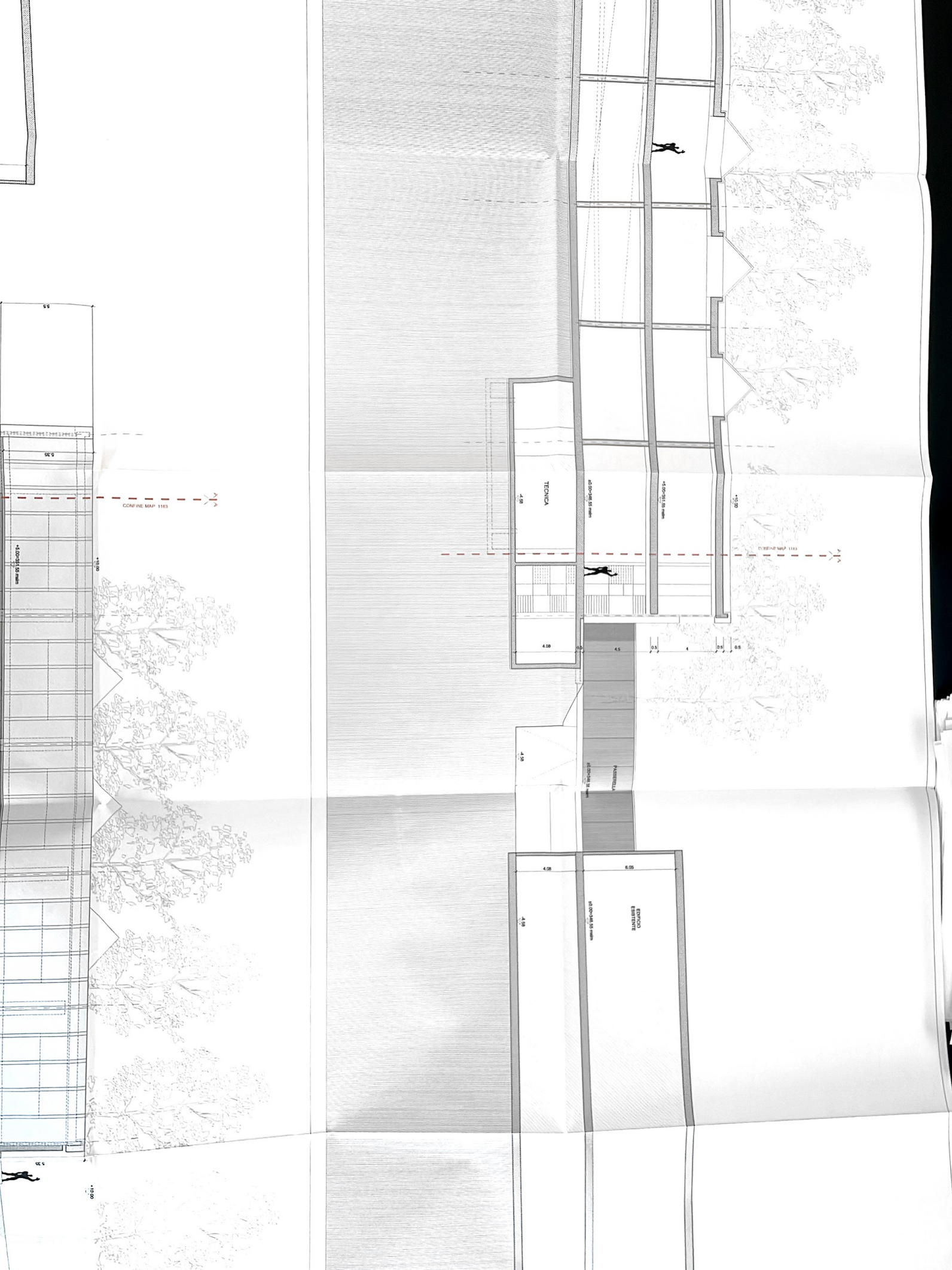




ESPAÇO
RESERVA

PARQUELADA

ESTACIONAMENTO

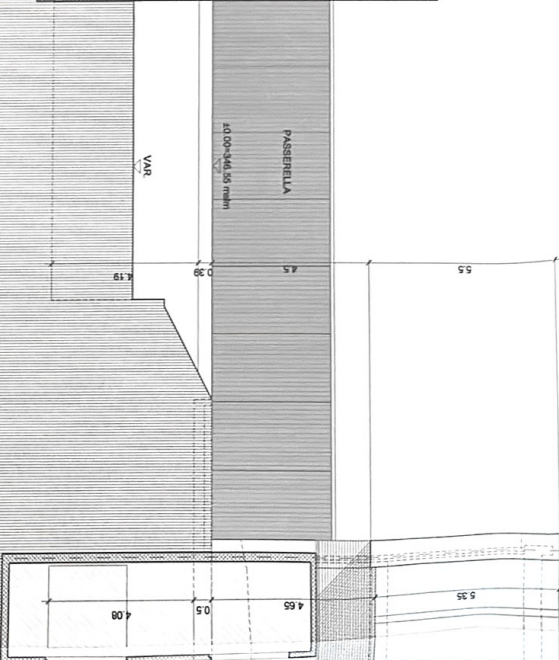
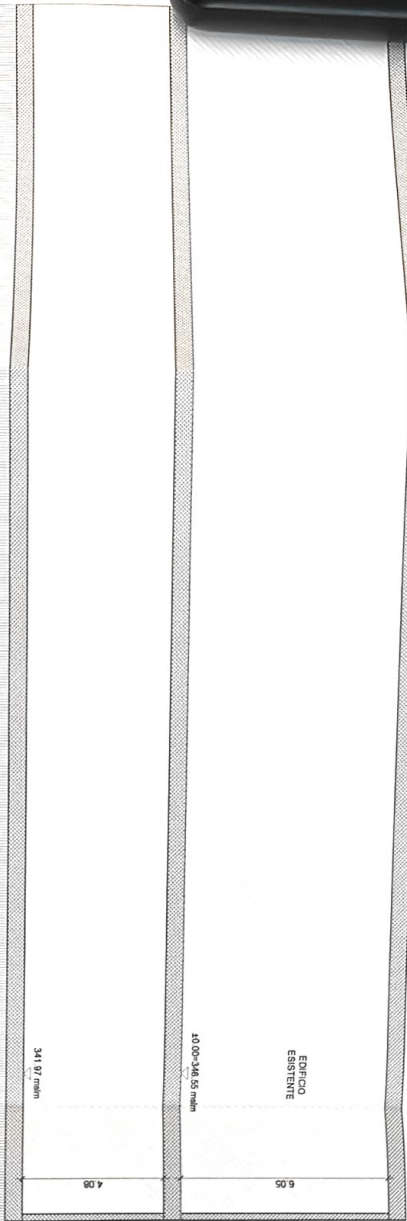


AMPLAMENTO EDIFICIO INDUSTRIALE MRS PAMP SA
CASTEL SAN PIETRO MAP. 1183 E 1180 - LUGLIO 2025

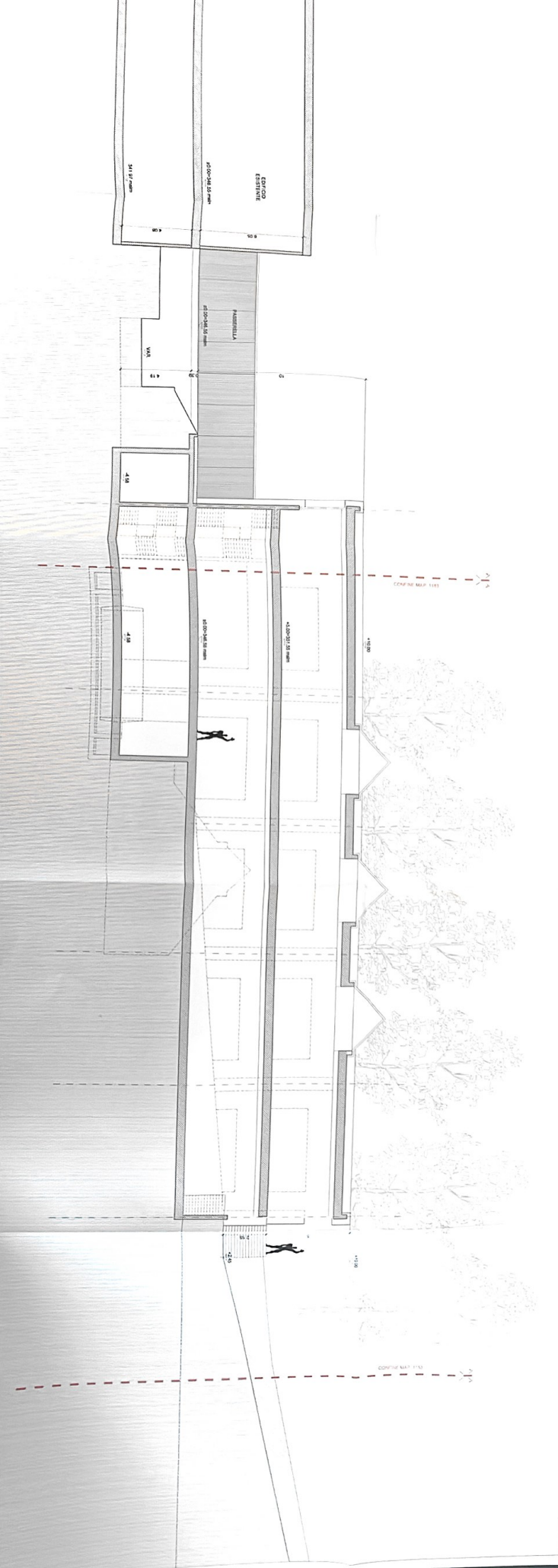


SEZIONE E-E

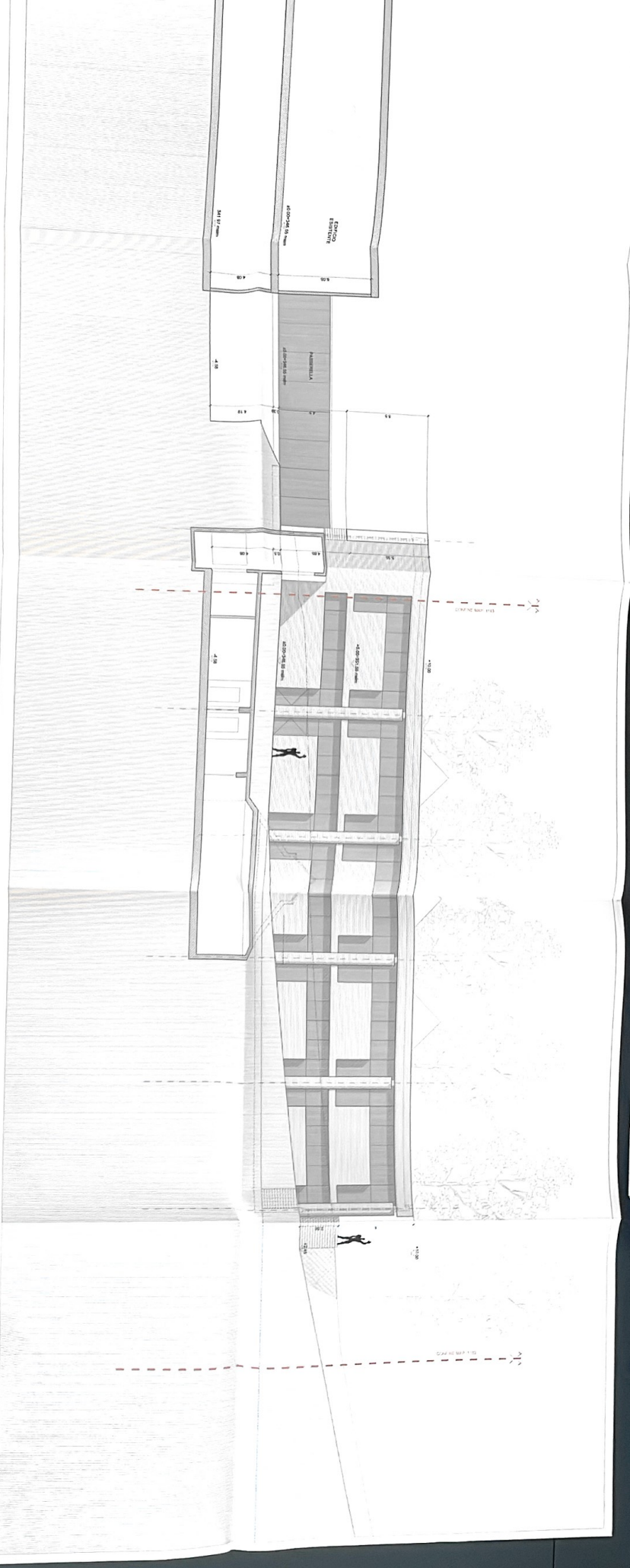
MARIO BOTTA ARCHITETTI, MENDRISIO
PAOLO ANDREANI ARCHITETTI, CHASSO



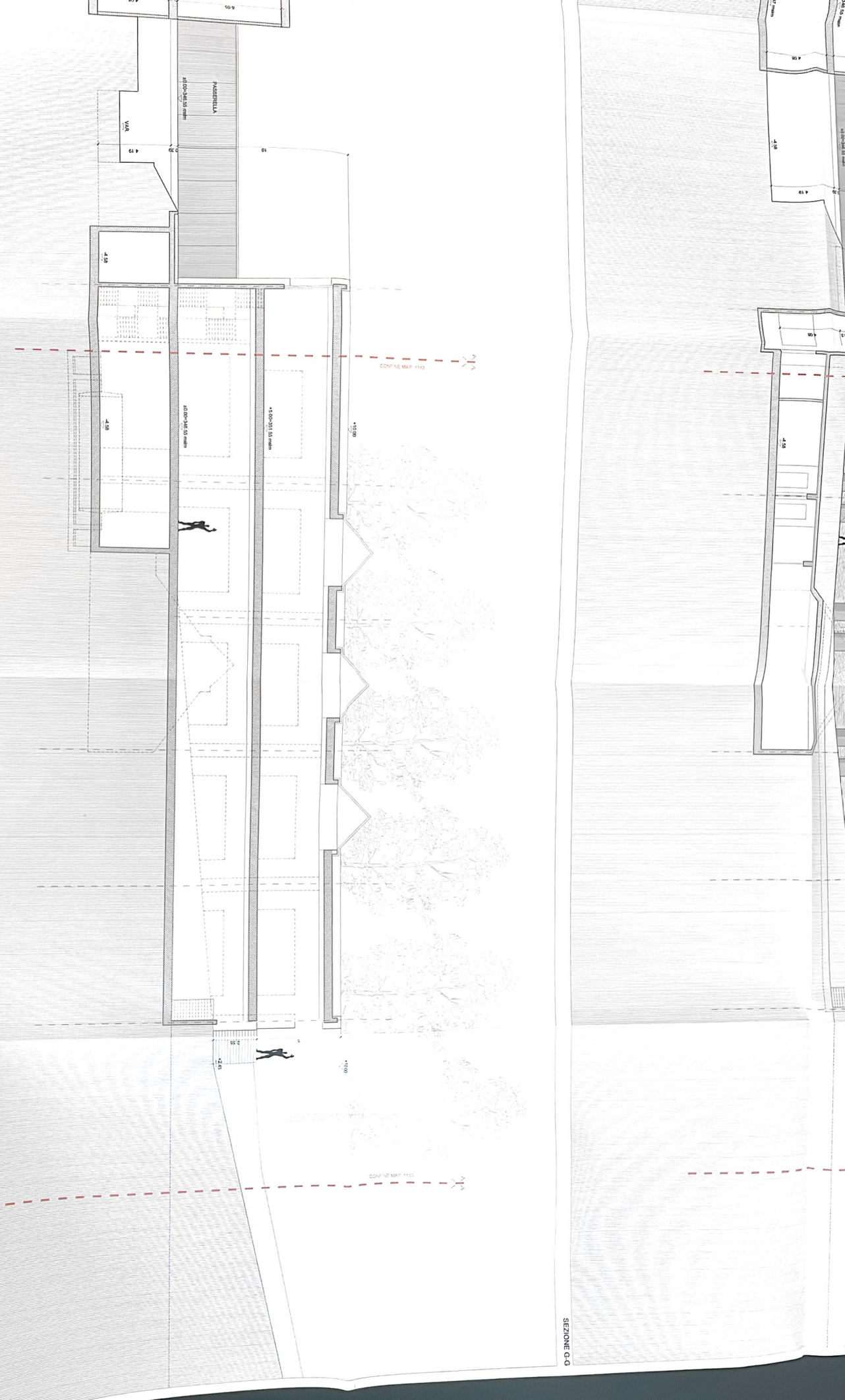
AMPLAMEN
CASTEL SAN



SEZIONE 0-C



AMPLIAMENTO EDIFICIO INDUSTRIALE MKS PAVIA S.p.A.
COSTEL SAN PIETRO MAP.1163 E 1160 - LUGLIO 2025



SEZIONE C-C

